

There are three 3/8"-16 threaded mounting/rigging points on the top and three on the bottom of the enclosure. These are for attaching the enclosure to a rigging system for mounting or suspending the loudspeaker. Remove the Allen-head bolts with a 7/32" Allen wrench and replace with structural eyebolts or other properly load-rated hardware. It is recommended that you use the Community EYBLTKIT, containing four forged, load-rated eyebolts, with a steel cup-washer for each. The bottom rear point can be used as a pull-back point to set a down-angle for the loudspeaker.

Each mounting/rigging point has a WLL (Working Load Limit) of 150 lb. vertical pull (see FIGURE 1) but it must be de-rated for any other direction of pull according to formula: $WLL = \text{COSINE}(\text{Pull angle}) \times 150$. TABLE 1 shows the derated WLL for several pull angles.

Pull Angle	WLL	Pull Angle	WLL
0° (vertical)	150 lb.	45°	105 lb.
20°	140 lb.	50°	95 lb.
30°	130 lb.	60°	75 lb.
40°	115 lb.	70° to 90°	50 lb.

TABLE 1: Derating The Mounting Rigging Points

In FIGURE 1 the "Cutaway View" of the mounting/rigging points shows their construction; the "Outside View" shows the large, slotted screw heads of the retainer bolts that are on each side and the back of the enclosure.

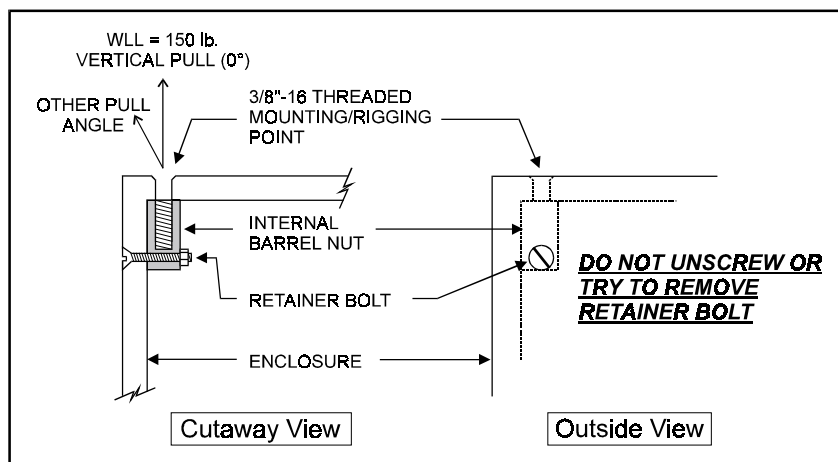


FIGURE 1: XLTE Mounting/Rigging Points

DANGER:

THE RETAINER BOLTS PERMANENTLY SECURE THE MOUNTING/RIGGING POINTS TO THE ENCLOSURE. DO NOT TRY TO UNSCREW, REMOVE OR OTHERWISE DISTURB ANY OF THESE BOLTS. DOING SO WILL DAMAGE THE MOUNTING/RIGGING POINTS AND MAKE THEM UNSAFE TO USE FOR MOUNTING OR RIGGING THE ENCLOSURE.