

### SPECIFICATIONS

<b>Loudspeaker Type:</b>	2-way, full-range
<b>Operating Range:</b>	85 Hz to 18 kHz 90 Hz to 16 kHz (±4 dB)
<b>Max Input Ratings:</b>	30W continuous, 60W program 15 volts RMS, 31 volts momentary peak
<b>Wattage Tap Selections (I/O5T only):</b>	Transformer taps with 70V/100V option 20 / 10 watts @ 100V 20 / 10 / 5 watts @70V
<b>Recommended Power Amplifier:</b>	50W to 70W @ 8 ohms
<b>Sensitivity (1W/1m):</b>	85 dB SPL (100 Hz to 16000 Hz 1/3 octave bands) 83 dB SPL (250 Hz to 4 kHz speech range)
<b>Maximum Output:</b>	100 dB SPL / 106 dB SPL (peak)
<b>Nominal Impedance:</b>	8 ohms
<b>Minimum Impedance:</b>	7.9 ohms @ 260 Hz
<b>Nominal -6dB Beamwidth:</b>	90°H (+13° / -50°, 2 kHz to 16 kHz) 50°V (+64° / -12°, 2 kHz to 16 kHz)
<b>Axial Q / DI:</b>	13.9 / 11.4, 2 kHz to 16 kHz
<b>Crossover Frequency:</b>	2 kHz
<b>Recommended Signal Processing:</b>	90 Hz high pass filter
<b>Drivers:</b>	LF (1) 5" HF (1) ½"
<b>Input Connection:</b>	Binding post inputs
<b>Controls:</b>	4 position switch (I/O5T only)
<b>Enclosure:</b>	High-impact polypropylene
<b>Finish:</b>	Black or white
<b>Mounting/Rigging Provisions:</b>	(2) mounting points for use with included Infin-A-Ball mounting system; (1) Picture hanger style
<b>Grille:</b>	Powdercoated steel, black or white
<b>Supplied Accessories:</b>	(1) Infin-A-Ball mounting bracket
<b>Dimensions—Height:</b>	11.172 inches / 283 mm
<b>Width:</b>	6.575 inches / 167 mm
<b>Depth:</b>	6.437 inches / 163.5 mm
<b>Weight:</b>	I/O5 — 5.2 lbs (2.35 kg) I/O5T — 6.74 lbs (3.05 kg)
<b>Shipping Weight (In Pairs):</b>	I/O5 — 14 lbs (6.4 kg) I/O5T — 17.72 lbs (8.04 kg)

#### NOTES:

1. Sensitivity: Free field pink noise measurement at 10 ft (3 m) at 50% power; extrapolated to 1 meter and an input of 2.83 volts RMS.
2. Watts: All wattage figures are calculated using the rated nominal impedance.



### APPLICATIONS

- Swimming pools
- Sports stadia
- Houses of worship
- Sports facilities and health clubs
- Cruise ships
- Schools
- Corporate training rooms

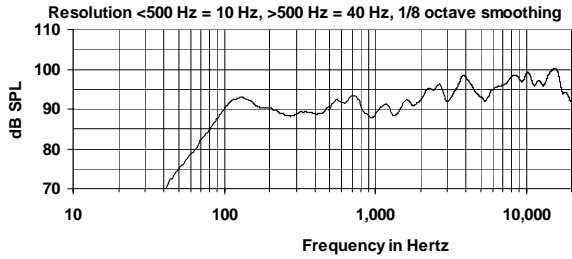
### FEATURES

- Compact injection molded cabinet
- 90 x 50 dispersion
- Binding post inputs for easy and secure terminations
- Polypropylene LF cones for all-weather use
- Powdercoated steel grille
- Suitable for indoor and indirect outdoor applications of all types
- Infin-A-Ball mounting bracket included
- Available with or without a 70V/100V transformer
- Available in black or white finishes
- Five-year warranty

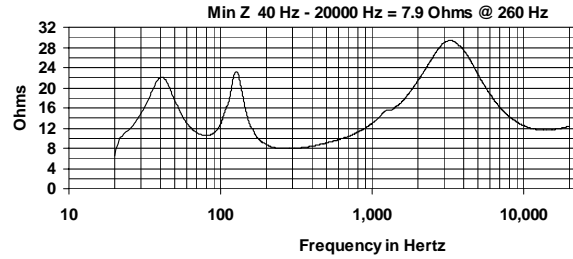
### DESCRIPTION

The I/O5 is a compact 5-inch, two-way system designed to provide great performance in areas where space is at a premium. The I/O5 easily outperforms many speakers of a larger size, and easily handles 60 watts of program power. Other features include a smooth sounding ½-inch Mylar diaphragm dome tweeter and a long excursion 5-inch woofer. Available in black (I/O5B, I/O5BT) or white (I/O5W, I/O5WT) finishes. Available with or without a factory-installed 70V/100V transformer. Five year warranty.

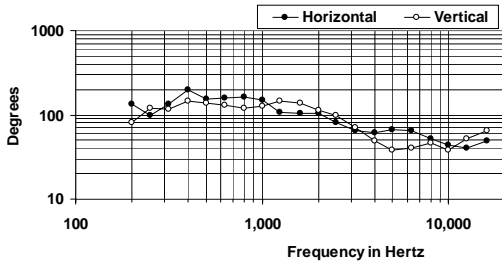
### FREQUENCY RESPONSE



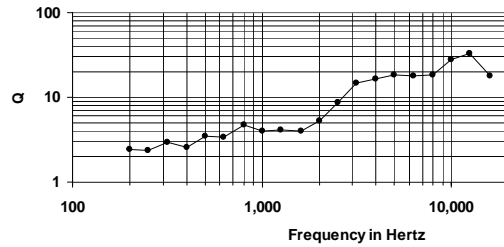
### IMPEDANCE



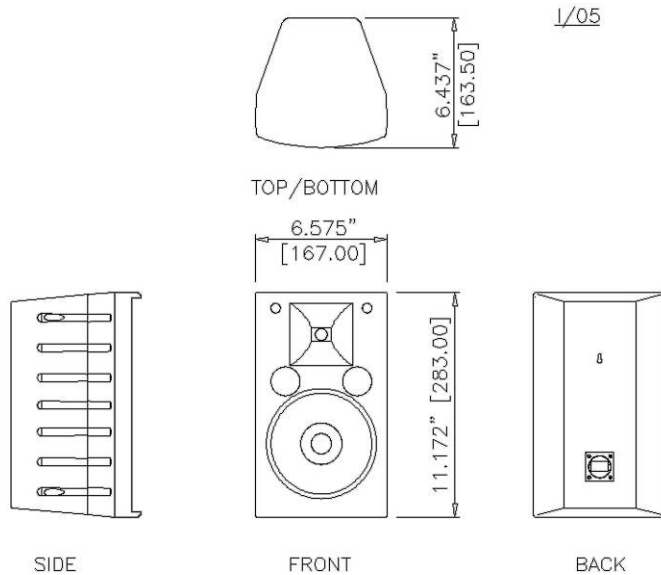
### BEAMWIDTH



### AXIAL Q



### DIMENSIONS



### TAP INSTRUCTION INPUT LABEL FOR I/O5T VERSION

