

Community

SLS960

THREE-WAY ELECTRONICALLY CONTROLLED FULL-RANGE LOUDSPEAKER SYSTEM

SPECIFICATIONS (See notes 1 and 2)

Loudspeaker Type: 3-way, Electronically controlled, full-range

Operating Range: 75 Hz - 18 kHz, 90 Hz - 18 kHz (+/-3dB)

Max Input (Passive):

400W continuous, 1000W program

57 volts RMS, 126 volts momentary peak

Recommended Power Amp: 830W to 1200W @ 8 Ohms

Max Inputs (Biamp):

LF: (Same as for Passive mode)

Recommended LF Power Amp: (Same as for Passive mode)

MF/HF: 80W continuous, 200W program

25 volts RMS, 57 volts momentary peak

Recommended MF/HF Power Amp: 170W to 240W @ 8 Ohms

Sensitivity 1W/1m: 108 dB SPL (80 Hz - 16 kHz 1/3 octave bands)

109 dB SPL (250 Hz - 4 kHz speech range)

Maximum Output: 134 dB SPL / 141 dB SPL (peak)

Nominal Impedance (passive): 8 Ohms

Min Impedance: 4.1 Ohms @ 340 Hz

Nominal Impedances (Biamp): LF: 8 Ohms, HF: 8 Ohms

Nominal -6dB Beamwidth:

65° H (+18° / -23°, 630 Hz - 16 kHz)

50° V (+28° / -18°, 630 Hz - 16 kHz)

Axial Q / DI: 23.6 / 13.7, 630 Hz - 16 kHz

Crossover Frequencies: 650 Hz / 3 kHz

Recommended Signal Processing:

650 Hz crossover (for biamp)

60 Hz high pass filter

Drivers (Ferrofluid-cooled):

LF (2) 10" cast frame

MF (1) M200 2", non-metallic diaphragm

HF (1) VHF100 1" exit, non-metallic diaphragm

Driver Protection: PowerSense™ DDP

Input Connection: (2) Neutrik NL4MP

(2) dual banana jacks

Controls: Passive / Biamp switch

Enclosure: 13-ply 18 mm Baltic birch, Polane painted (see options)

Enclosure Hardware:

(2) steel, recessed bar handles

Mounting / Rigging Provisions:

(8) 3/8-16 rigging points, W.L.L. 300 lb. vertical pull each

(3) Pull-back points, W.L.L. 60 lb. each

Grille: 16 gauge perforated steel (see options)

Required Accessories: Electronic speaker controller

Supplied Accessories: (4) Rubber feet with mounting screws

Optional Accessories: 3/8EYBLTKIT: (4) forged 3/8-16 eyebolts

Dimensions: Height: 33.4 in. / 849 mm

Width (front): 19.8 in. / 504 mm

Width (rear): 12.2 in. / 309 mm

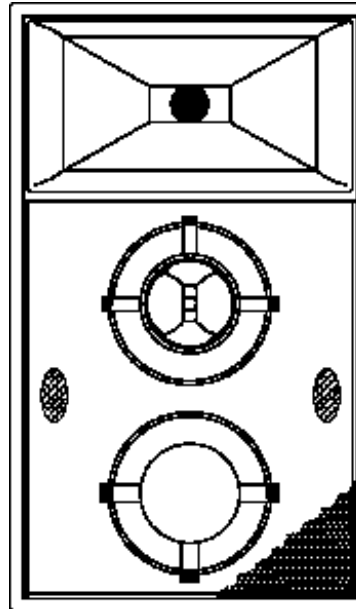
Depth: 20.25 in. / 514 mm

Weight: 133.5 lbs. / 60.6 kg

Shipping Weight: 151.5 lbs. / 68.7 kg

1. Sensitivity: Free field pink noise measurement at 20 ft / 6.1 m at 10% power; extrapolated to 1 meter and an input of 2.83 volts RMS.

2. Watts: All wattage figures are calculated using the rated nominal impedance.



33.4 in.
849 mm

APPLICATIONS:

- Arenas / Sports Venues
- Houses of Worship
- Performing Arts Centers
- Concerts
- Theaters
- Dance Clubs
- Portable SR Systems

DESCRIPTION

The Community Solutions SLS960 loudspeaker is a high output, high sensitivity, horn-loaded, three-way, full-range loudspeaker system with an integral one-piece fiberglass baffle of Wavefront Coherent™ design. It provides excellent full-range musical reinforcement. Engineered for use in portable or permanent installations, the loudspeaker enclosure is constructed of void-free, heavily braced Baltic plywood with integral steel bracing connected to threaded 3/8 in. nuts which provide robust suspension points for vertical or horizontal mounting. The system may be used in passive mode or switched for bi-amplification. Available in black or white with white grille cover, with or without handles. Five year limited warranty. Use with Community SBS Series loudspeakers. Electronic speaker controller required.

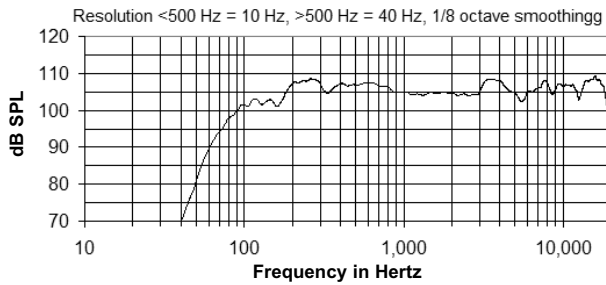
OPTIONS:

- SLS960 = Black paint with handles, no grille cloth.
- SLS960WHT = White paint, no handles, white grille cloth

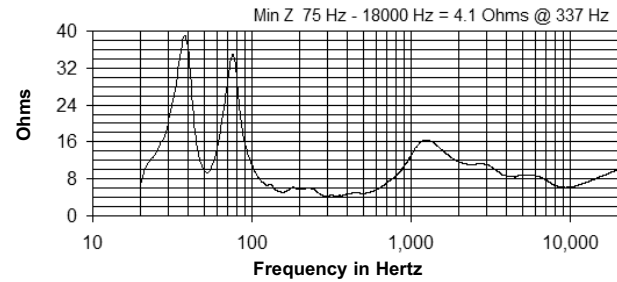
COMMUNITY PROFESSIONAL LOUDSPEAKERS

333 EAST 5TH STREET CHESTER, PA 19013-4511 USA Phone (610) 876-3400 Fax (610) 874-0190 www.communitypro.com

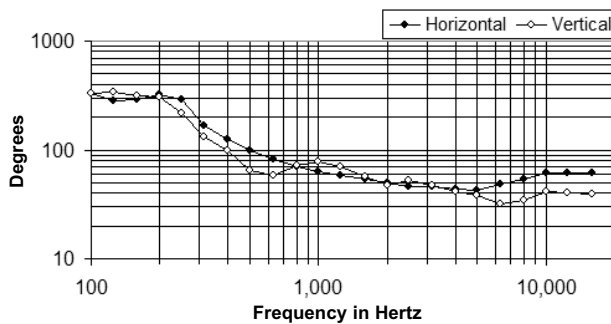
FREQUENCY RESPONSE (WITH CONTROLLER)



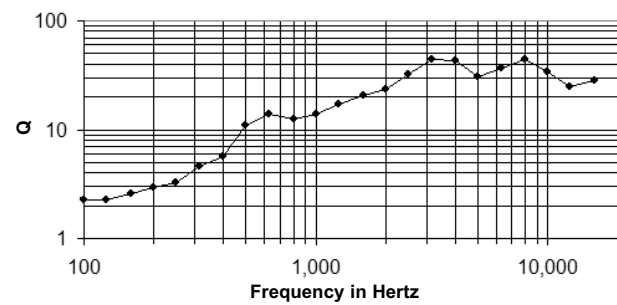
IMPEDANCE



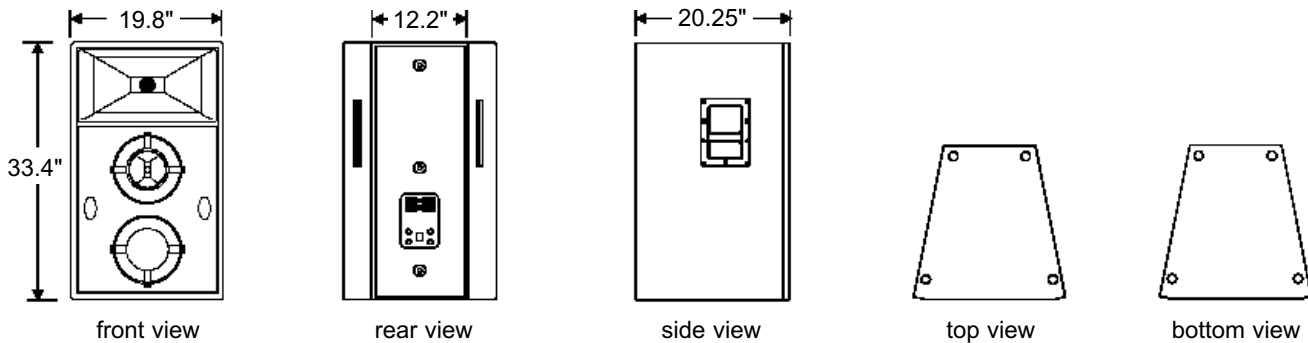
BEAMWIDTH



AXIAL Q



DIMENSIONS



ARCHITECTS' AND ENGINEERS' SPECIFICATIONS

The loudspeaker system shall be a horn-loaded, three-way, full-range bass reflex trapezoidal design with two 10 in. Ferrofluid-cooled woofers, one 2 in. exit Ferrofluid-cooled midrange compression driver with a non-metallic diaphragm and one 1 in. exit HF driver with a non-metallic diaphragm mounted on a fiberglass waveguide. Drivers shall be connected to an integral crossover with crossover frequencies of 650 Hz and 3 kHz and integral over-current protection circuitry using high positive current coefficient resistors. There shall be two Neutrik NL4MP and one dual banana input connectors. The loudspeaker enclosure shall be well-braced 18 mm 13-ply Baltic birch with a 16 gauge perforated steel grille and finished with black [white] paint. There shall be eight 3/8-16 integral threaded mounting points connected to internal steel bracing. The system shall have an amplitude response of 90 Hz to 18 kHz (+/- 3 dB), input capability of 57V RMS, 108 dB sensitivity at one meter and 2.83 V / 8 ohms nominal impedance. The nominal dispersion shall be 65°H x 50° V from 630 Hz to 16 kHz. The loudspeaker shall be 33.4 in. (849 mm) H x 19.8 in. (504 mm) W (front) x 12.2 in. (309 mm) W (rear) x 20.25 in. (514 mm) D and weigh 133.5 lbs. (60.6 kg).

Specifications subject to change without notice.