

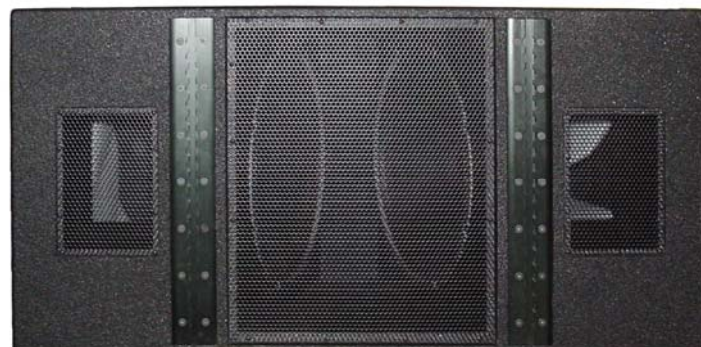


## SPECIFICATIONS

<b>Loudspeaker Type:</b>	Subwoofer
<b>Operating Range:</b>	30 Hz to 250 Hz 40 Hz to 125 Hz ( $\pm 3$ dB)
<b>Max Input Ratings:</b>	800W continuous, 2000W program 57 volts RMS, 126 volts momentary peak
<b>Recommended Power Amplifier:</b>	1670W to 2400W @ 4 ohms
<b>Sensitivity (1W/1m):</b>	99 dB SPL (40 Hz to 125 Hz 1/3 octave bands)
<b>Maximum Output:</b>	128 dB SPL / 135 dB SPL (peak)
<b>Nominal Impedance:</b>	4 ohms
<b>Minimum Impedance:</b>	3.3 ohms @ 40 Hz
<b>Nominal -6dB Beamwidth:</b>	360°H x 180°V
<b>Axial Q / DI:</b>	1 / 0, 40 Hz to 150 Hz
<b>Recommended Signal Processing:</b>	80 Hz - 125 Hz electronic crossover 25 Hz high pass filter
<b>Drivers:</b>	LF 2 x 18"
<b>Driver Protection:</b>	None
<b>Input Connection:</b>	(2) NL4-compatible locking connectors (1) 4-screw barrier strip
<b>Controls:</b>	None
<b>Enclosure:</b>	13-ply, solid birch plywood
<b>Enclosure Hardware:</b>	(10) Ergo-Grip handles
<b>Mounting/Rigging Provisions:</b>	Integral fly track
<b>Grille:</b>	Steel
<b>Required Accessories:</b>	None
<b>Supplied Accessories:</b>	None
<b>Optional Accessories:</b>	CASTERS4: Kit of 4 heavy duty 4" casters TLF218-COVER: Loudspeaker cover
<b>Dimensions—Height:</b>	22.418 inches (569 mm)
<b>Width:</b>	44.95 inches (1142 mm)
<b>Depth:</b>	29.8 inches (757 mm)
<b>Weight:</b>	215 lbs (97.5 kg)
<b>Shipping Weight:</b>	229 lbs (103.8 kg)

### NOTES:

- Sensitivity: Free field pink noise measurement at 16 ft (4.9 m) at 40% power; extrapolated to 1 meter and an input of 2 volts RMS.
- Watts: All wattage figures are calculated using the rated nominal impedance.



## APPLICATIONS

- Sound reinforcement / portable sound systems
- Dance and nightclubs
- DJ systems
- Houses of worship
- Athletic field houses
- Theaters and performing arts centers
- Convention centers, warehouses and factories

## FEATURES

- Active-air and vented pole cooling
- Independent bass ports for efficient output
- Rugged birch plywood narrow-profile enclosure
- Ergo-Grip handles
- Integral fly track
- Durable Tuf-Coat finish
- Stacking feet and cups
- Threaded T-nuts for optional caster kit (CASTERS4)
- Five-year warranty

## DESCRIPTION

The TLF218 is an efficient, dual 18-inch subwoofer that can be used with any full-range loudspeaker system. It has exceptional punch, high output, and low distortion. The TLF218 uses a unique combination of techniques to keep voice coil temperatures low to avoid power compression that causes reduced output at higher volume levels. Active-Air cooling uses the bass ports to move outside air over the motor structures of each driver. Additionally, cone movement drives air through the vented magnet pole-piece to cool the motor structures. Balanced Cone Loading (BCL) improves the linearity of the system by balancing the front and rear air loads. The enclosure has rigid internal bracing that reduces sound energy losses from enclosure vibration. The TLF218 has integral fly track and stacking feet and cups. The back of the cabinet has threaded T-nuts for four casters available as an optional accessory (model# CASTERS4).

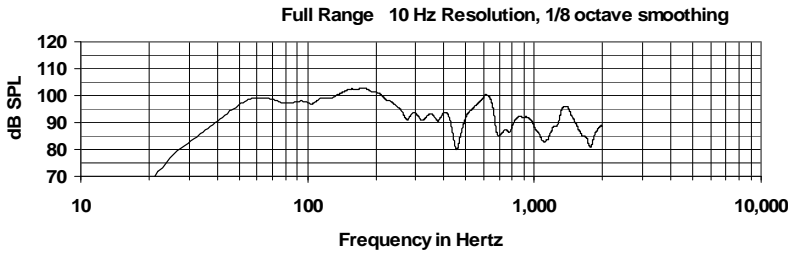


True to Specification

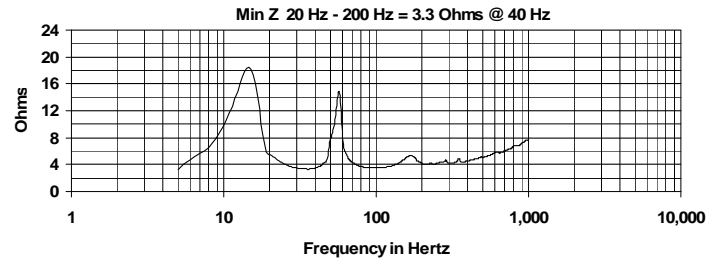
# TLF218

LOW FREQUENCY DUAL 18-INCH SUBWOOFER

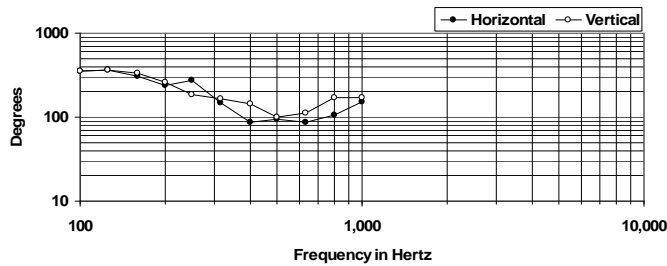
## FREQUENCY RESPONSE



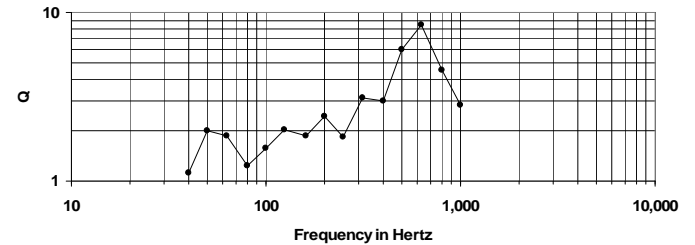
## IMPEDANCE



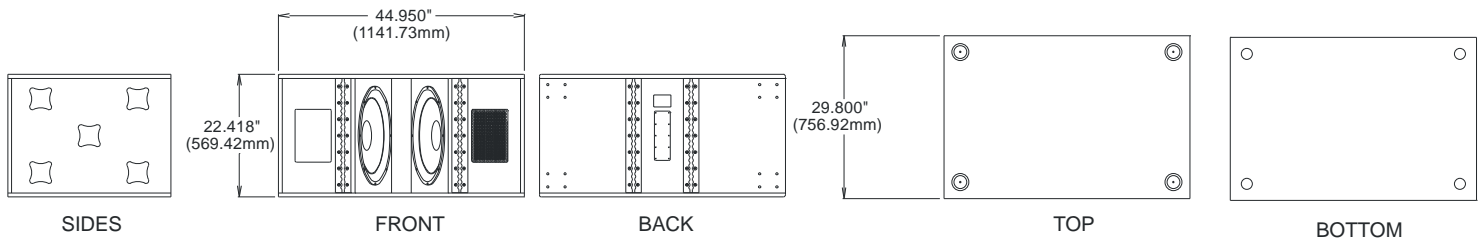
## BEADWIDTH



## AXIAL Q



## DIMENSIONS



## ARCHITECTURAL SPECIFICATIONS

The loudspeaker system shall be a low frequency dual 18-inch driver subwoofer, utilizing a balanced cone loading design. The cabinet shall be a 13-ply solid birch plywood enclosure with a 16-gauge perforated grille. The enclosure shall incorporate ten cup handles, two flyable track bars on the face and two on the back of the enclosure. The loudspeaker system shall have an amplitude response of 40 Hz-125 Hz (+/- 3 dB SPL), an input capacity of 57V RMS, 99 dB SPL sensitivity @ 2V / 1 meter between 40 Hz-125 Hz at a nominal 4 ohm impedance. The nominal dispersion shall be 360° H x 180° V over a usable frequency range. The dimensions of the enclosure are defined as 22.418 x 44.95 x 29.8 inches (HWD) at a weight of 215 lbs.

*Community strives to improve its products on a continual basis. Specifications are therefore subject to change without notice.*