

# Community



## Description

The VERIS 28 is a two-way, full-range loudspeaker system suitable for use in a wide variety of fixed installations.

This versatile unit is ideal for distributed systems such as those found in cafes, restaurants, shopping centers and airports. With its powerful dual cone drivers, the VERIS 28 provides additional low frequency and mid-range output over that of its sister product, the VERIS 8.

When paired with a subwoofer such as the VERIS 210S, a VERIS 28 system will produce high-fidelity, broad spectrum sound that belies its modest size.

In addition to distributed systems, the VERIS 28 is an excellent choice for ancillary delay applications. When used to augment a FOH system in venues such as auditoria, theatres, and houses of worship, delay speakers can significantly even-out the difference in sound pressure level from the front of the room to the rear of the room. Units may be positioned for underbalcony fill, overbalcony fill, or simply placed towards the rear of the seating areas. By deploying VERIS 28 loudspeakers in such a manner, the system designer will have far greater control over relative levels and relative tonal response when commissioning and equalizing the installation.

The VERIS 28 may be mounted to a wall or ceiling surface with a yoke bracket (included), suspended from its M6 threaded rigging points, or installed using an OmniMount™ Series 60 mounting device.

## Applications

- Restaurants
- Pubs
- Cafes
- Houses of Worship
- Shopping Malls
- Airports
- Delay Fill

## Features

**Internal DYNA-TECH™ Dynamic Driver Protection Circuitry**

**Black or White Finish Available**

**Ferrofluid Treated HF Driver for Improved Heat Dissipation**

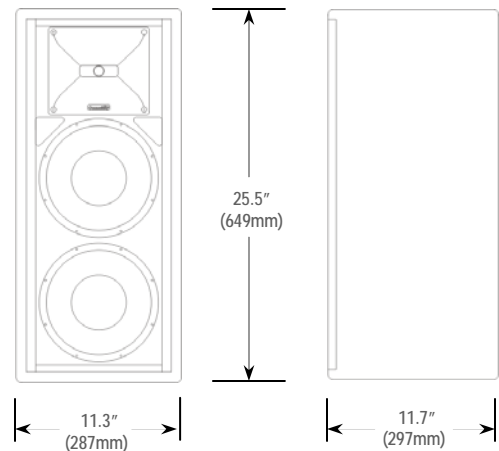
**Non-Resonant, Non-Metallic HF Diaphragm for Reduced Distortion**

**Carbon Ring Cone Technology Provides 30% More Piston Area with Increased Excursion Capability**

**Terminal Strip and NL4 Compatible Connectors**

# VERIS 28

TWO-WAY FULL-RANGE LOUDSPEAKER SYSTEM



## SYSTEM

**Format:** Two-way full-range, vented bass, trapezoidal, dual cone drivers

**Operating Range:** 70 Hz - 18 kHz

**Frequency Response:** 90 Hz - 10 kHz ( $\pm 4$  dB)

**Dispersion (-6 dB):** 90° H x 70° V (in vertical position)

**Crossover Frequency:** 2 kHz

**Maximum SPL @1m:** 118 dB continuous / 125 dB peak

**Sensitivity in SPL:** 93 dB (125 Hz - 10 kHz, 1/3 octave)  
93 dB (250 Hz - 4 kHz, speech range)

**Max Power Handling:** 300W RMS (34.6V)  
750W Program / 1485W Peak

**Impedance:** Nominal 4 $\Omega$  / Min. 4.5 $\Omega$  at 210 Hz

**Connectors:** Terminal Strip and NL4 Compatible

## TRANSDUCERS

**Low Frequency:** Dual 8" (203mm) 150W RMS  
375W Program, 8 $\Omega$

**High Frequency:** 3/4" (19mm) 50W RMS  
125W Program, 8 $\Omega$

## MECHANICAL

**Enclosure:** Trapezoidal (22.5° included angle)  
11-ply cross-laminated birch

**Finish:** Black or white catalyzed polyester paint (specify at time of ordering)

**Rigging Provisions:** (9) M6 threaded rigging fittings<sup>1</sup>  
(4) M6 threaded fittings for V-HSS  
(4) M8 threaded fittings for OmniMount™ 60 bolt pattern;  
yoke bracket included

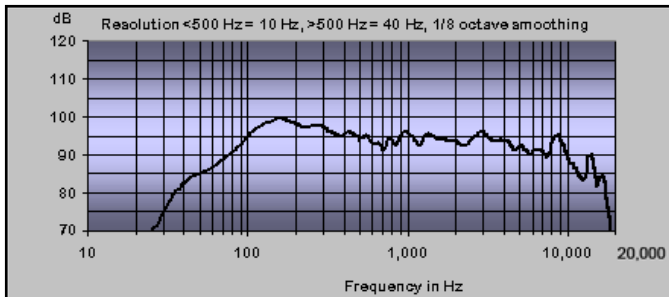
**Grille:** Powder coated steel, black or white

**Dimensions:** 25.5" (649mm) x 11.3" (287mm) x  
11.7" (298mm)

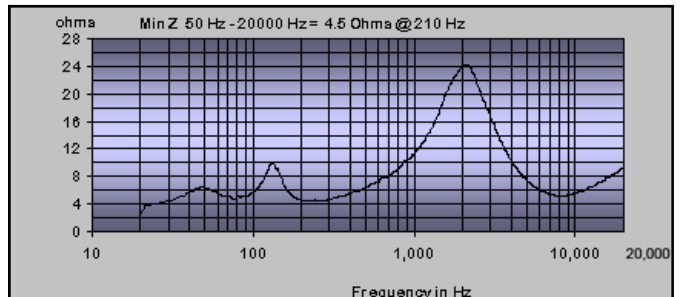
**Net Weight:** 31 lbs / 14.1 kg

# VERIS 28

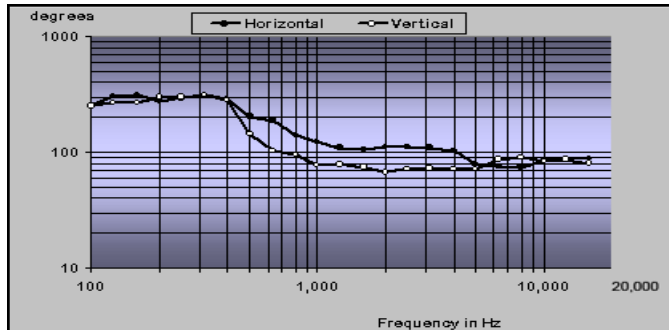
TWO-WAY FULL-RANGE LOUDSPEAKER SYSTEM



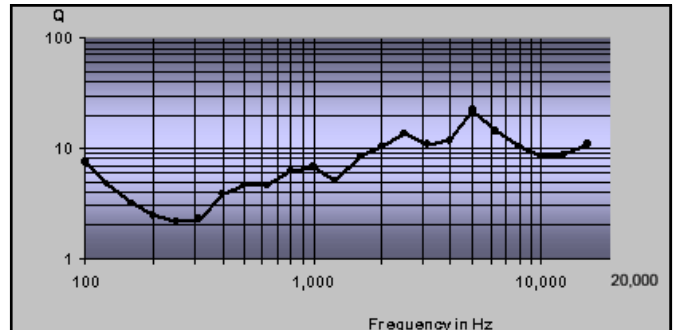
Amplitude versus Frequency (in free space)



Impedance versus Frequency



Directivity Index



Axial Q

Recommended Power: 630 - 900 WRMS at 4Ω

Recommended High-Pass Filter: 70 Hz\*

\*24 dB / octave or higher

## Installation Accessories



**VERIS Handle & Stand Socket**  
Attaches to Omni-Mount™ Series 30 fasteners.



**Tilting Bracket**  
Allows precise angling of a VERIS loudspeaker.



**Ceiling Mount Kit**  
Derives a hang point from a ceiling surface.



**Yoke Bracket**  
Provides 0°, 10°, & 20° inclination to wall surface.



**Tilting Brackets**  
Multiple brackets may be used to position one loudspeaker below another.



**Eyebolt Kits**  
Suspend VERIS enclosures safely and easily.

**Seat Track Kit**  
Quick and easy way to fly VERIS enclosures.

Community Professional Loudspeakers, 333 East Fifth Street, Chester, PA USA 19013-4511  
TEL: 610-876-3400 · FAX: 610-874-0190 · www.communitypro.com