

IV6 ACCESSORY BRACKET REFERENCE *Available from Polar Focus*

	OFF THE SHELF	
1	IV6-ZB-TCK	Z-Beam and Tilt Cable Kit (for use with IV6-LAF-PBB - shown)
2	IV6-ZB-DHB	Z-Beam "Dead Hang" Bracket (for use with IV6-LAF-PBB)
3	PY1-ZBH-1550	Two Point Permanent Install Mount with Center Service Pick Point
4	PY1-ZBR-1550	Self-Leveling Dual Hoist Mount
5	PY1-SLH	Self-Leveling Two Point Bridle Mount (1200lbs. WLL)
6	PY1-RBC-1-1100	Level, Steel I-Beam Mount
7	PY1-BTP1212-1550	12" x 12" Box Truss Plate Mount
8	RLP-X2-1800	Redundant Load Point
9	PY0-WMV-2226-250	Wall Mount (250lbs. WLL)
10	PY0-STEM	Hidden Two Point Permanent Install Through-Ceiling Mount (300lbs. WLL)
11	PY0-ZBH-300	Two Point Permanent Install Mount with Center Service Pick Point (300lbs. WLL)

	SEMI-CUSTOM	User-defined dimensions required
12	PY1-UJEXT-POST	Custom Length Ceiling Extension Post (available from 2ft. to 16ft.)
13	PY1-CBA-3	Custom Sized Mount for Level or Sloped Wood-Based Beams (500lbs. WLL)
14	PY1-CBA-4	Custom Sized Mount for Rolled Wood-Based Beams (450lbs. WLL)

Contact Polar Focus (linearrayframes.com) for additional information.

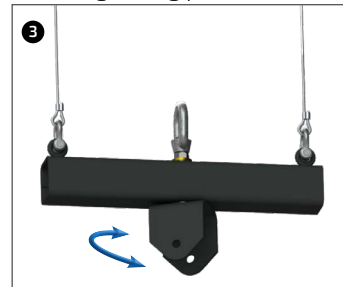
All PY0/PY1 brackets shown are infinitely adjustable, and will connect to the carriage hang points on the IV6-GP-AF and IV6-SB-AF.



IV6-ZB-TCK



IV6-ZB-DHB



PY1-ZBH-1550



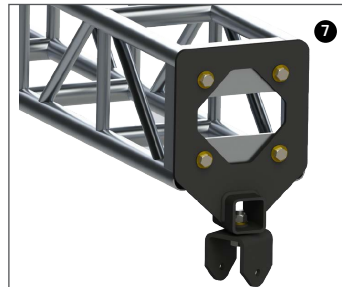
PY1-ZBR-1550



PY1-SLH



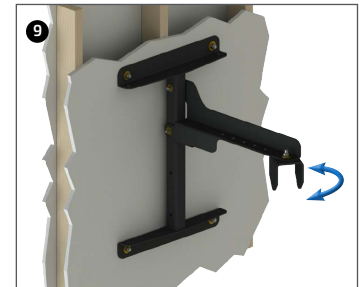
PY1-RBC-1-1100



PY1-BTP1212-1550



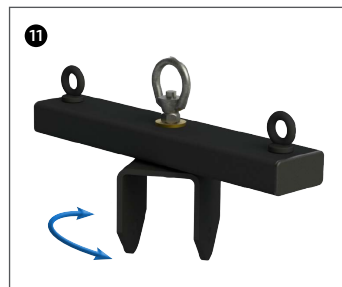
RLP-X2-1800



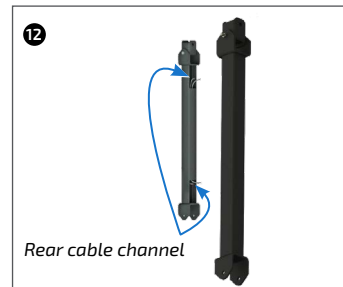
PY0-WMV-2226-250



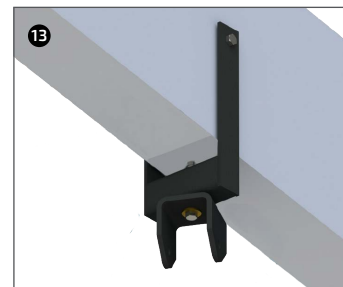
PY0-STEM



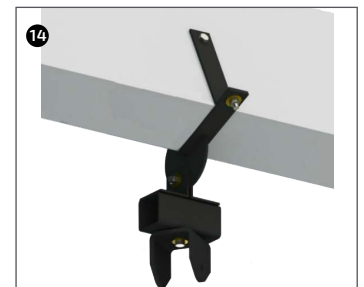
PY0-ZBH-300



PY1-UJEXT-POST



PY1-CBA-3



PY1-CBA-4