

SPECIFICATIONS

Loudspeaker Type:	2-way, full-range
Operating Range:	65 Hz to 16 kHz 95 Hz to 15 kHz (± 3 dB)
Max Input Ratings:	250W continuous, 600W program 45 volts RMS, 98 volts momentary peak
Recommended Power Amplifier:	500W to 720W @ 8 ohms
Sensitivity (1W/1m):	97 dB SPL (100 Hz to 12500 Hz 1/3 octave bands) 98 dB SPL (250 Hz to 4 kHz speech range)
Maximum Output:	121 dB SPL / 128 dB SPL (peak)
Nominal Impedance:	8 ohms
Minimum Impedance:	4.5 ohms @ 200 kHz
Nominal -6dB Beamwidth:	120°H (+2° / -51°, 2 kHz to 12.5 kHz) 60°V (+43° / -18°, 2 kHz to 12.5 kHz)
Axial Q / DI:	9.0 / 9.5, 2 kHz to 12.5 kHz
Crossover Frequency:	1.2 kHz
Recommended Signal Processing:	65 Hz high pass filter
Drivers:	LF (2) 8" carbon fiber, Ferrofluid-cooled HF (1) 1" exit, titanium HF driver, Ferrofluid-cooled
Driver Protection:	None
Input Connection:	(2) NL4MP / 2 terminal barrier strip
Controls:	None
Enclosure:	13-ply Baltic birch
Enclosure Hardware:	None
Mounting/Rigging Provisions:	(6) rigging points (M10 threaded inserts)
Grille:	Steel, black or white powdercoat
Required Accessories:	24 dB/Octave 65 Hz high pass filter
Supplied Accessories:	(1) mounting yoke bracket
Optional Accessories:	None
Dimensions—Height:	11.3 inches / 287 mm
Width:	21.75 inches / 552 mm
Depth:	10.4 inches / 264 mm
Weight (i2W8):	42 lbs / 19 kg
Weight (i2W8 with bracket):	47 lbs / 21 kg
Shipping Weight:	51 lbs / 23 kg

NOTES:

- Sensitivity: Free field pink noise measurement at 40 ft (12.2 m) at 65% power; extrapolated to 1 meter and an input of 2.83 volts RMS.
- Watts: All wattage figures are calculated using the rated nominal impedance.



APPLICATIONS

- Stadium fill
- Underbalcony fill
- Foreground music
- Stage monitor
- Stage rail fill
- Cluster downfill
- Distributed systems

FEATURES

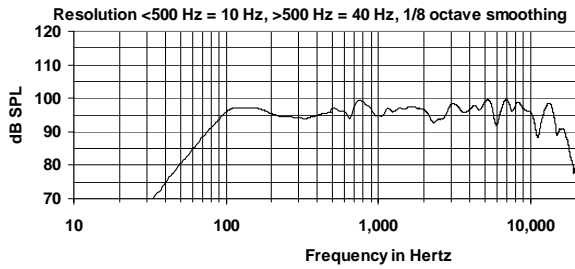
- Carbon fiber cones
- Integral mounting points
- High power passive crossover
- 18-gauge perforated powdercoated steel grille
- Available in black or white finishes
- Mounting yoke included (black or white)
- Optional 200W autoformer version available
- Five-year warranty

DESCRIPTION

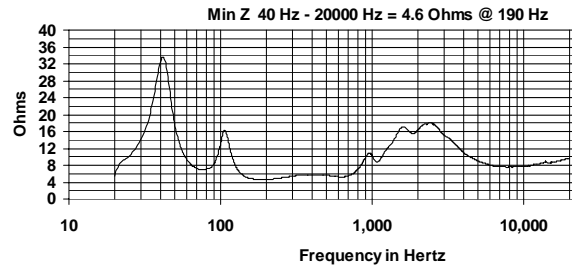
The Community i2W8 loudspeaker is a two-way, full-range loudspeaker system designed to provide high quality music and voice reproduction in applications requiring smooth, ultra-wide, horizontal coverage. It provides an uncompromised musical system in a compact, attractive package. Engineered for use in underbalcony, downfill and distributed installations, the loudspeaker enclosure and faceplate are constructed of 13-ply Baltic birch; LF cones are of low mass, high stiffness carbon fiber; and the HF driver has a diaphragm of titanium. All drivers are Ferrofluid-cooled. The LF drivers and centrally placed ultra-wide 120° HF pattern control horn have been engineered to provide superior uniform pattern over the widest possible bandwidth. The unique "Super-V" configuration of the LF drivers provides exceptional uniform midrange pattern that would be impossible to create with a conventional flat wooden baffle plate.

The multipurpose i2W8 is available in either a black or white painted finish, with a matching steel mounting yoke included for ease of installation. It can also be ordered with or without a factory-installed 200W autoformer for 70V/100V applications (model i2W8T). Its six-sided, low profile enclosure and ultra-wide coverage pattern make the i2W8 ideal for use as a monitor, stage lip or side fill as well.

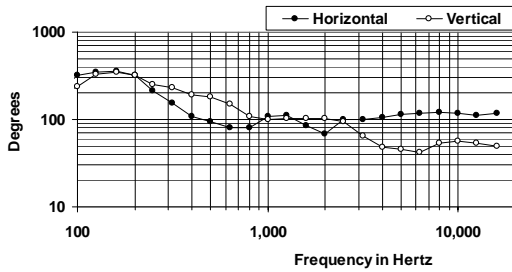
FREQUENCY RESPONSE



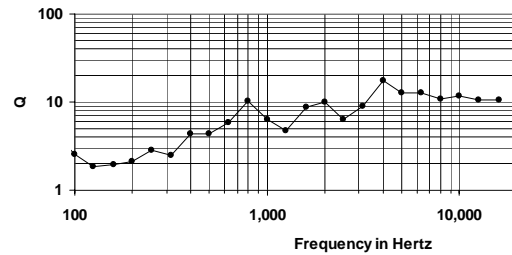
IMPEDANCE



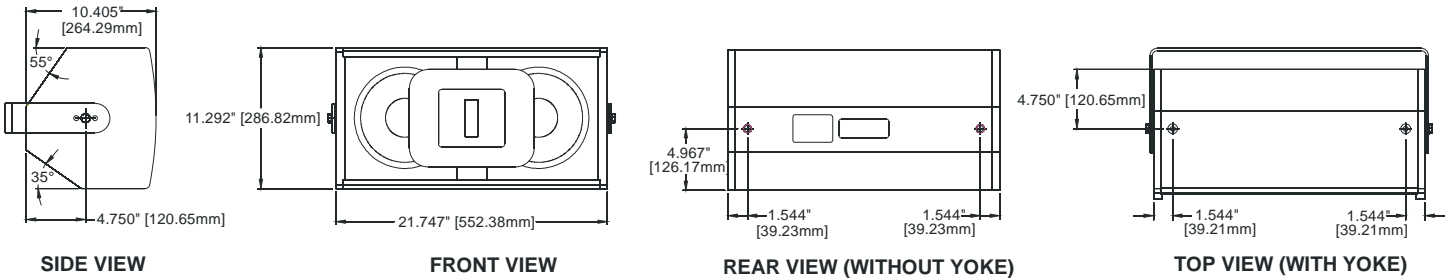
BEAMWIDTH



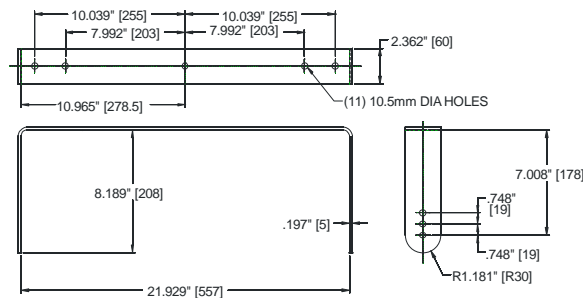
AXIAL Q



DIMENSIONS



Bracket Dimensions:



ARCHITECTURAL SPECIFICATIONS

The loudspeaker shall be a two-way, full-range design with two 8" (205 mm) carbon fiber cone woofers with a centrally mounted 1" exit titanium diaphragm HF compression driver mounted to a pattern control horn. All components shall be connected to an integral crossover with a crossover frequency of 1.2 kHz. The input connection shall be dual NL4MP/2 screw terminals. The loudspeaker enclosure shall be constructed of 13-ply Baltic birch with a perforated powdercoated steel grille and six integral M10 mounting points. The i2W8 shall meet the following performance criteria: amplitude response of 95 Hz to 15 kHz (+/-3dB), 250 watts RMS power handling, 97 dB SPL sensitivity (100 Hz - 12.5 kHz) at 1 meter with 1 watt applied. Nominal horn coverage pattern shall be 120° x 60° (H x V). Dimensions shall be 21.75 inches (552 mm) wide, 11.3 inches (287 mm) high, and 10.4 inches (264 mm) deep with a weight of 42 lbs (19 kg).

Community strives to improve its products on a continual basis. Specifications are therefore subject to change without notice.