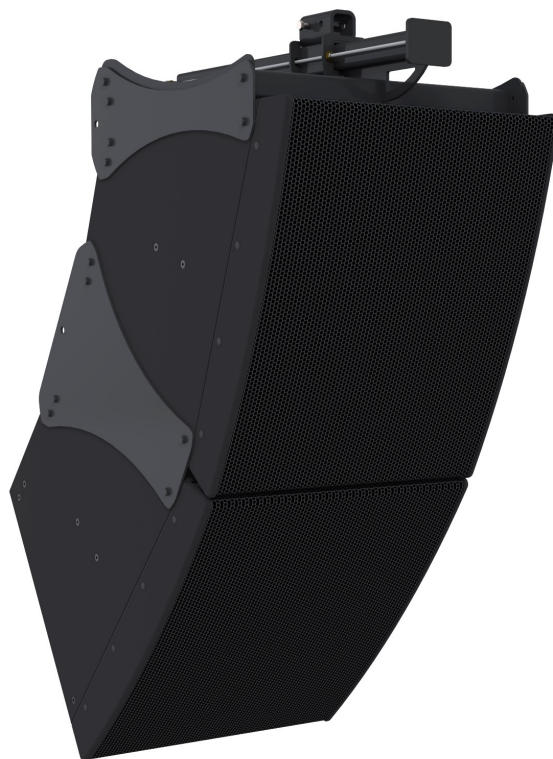


FOR IMMEDIATE RELEASE

JUNE 4, 2019



Community Shows Two Major New Product Lines at InfoComm 2019



Community Professional Loudspeakers is exhibiting at InfoComm 2019 and showing two new major product lines. At booth #6343 the company will display a wide range of its new and existing products. In Demo Room #W224E, Community will be introducing the L SERIES LVH-900 loudspeaker system, with ground-breaking beamforming technology that addresses the unique coverage and projection challenges of large venues and stadiums. There will also be demonstrations of the I SERIES Modular Vertical Array 600 and the launch of new Amplified Loudspeaker Controllers (ALC).

The new L SERIES LVH-900 Beamforming Venue Horn, combined with Community's proprietary room prediction software and Amplified Loudspeaker Controllers, precisely tailors the directivity of each loudspeaker, or array of loudspeakers, to meet the sound requirements in any application. Designed for exceptional performance in large venues, each LVH-900 consists of four 12-inch LF drivers, three Community M200 midrange compression drivers and four 1.5-inch HF compression drivers. Using patent-pending techniques, all drivers integrate into a single tri-axial waveguide that fills the entire 36 x 31-inch face of the enclosure, providing pattern control to below 200 Hz. The LVH-906 and LVH-909 offer 60 or 90 degrees of fixed horizontal dispersion, respectively, with each allowing vertical dispersion beamforming ranging from 60 to 20 degrees, in symmetric or asymmetric configurations.

(continued on next page)

Media Contact: **Julia Lee** jlee@communitypro.com

FOR IMMEDIATE RELEASE

JUNE 4, 2019



The new Amplified Loudspeaker Controllers (ALC) are designed to provide all of the signal routing, zone switching, DSP processing, protective limiting, remote monitoring, and amplification functions needed between a mixer and the loudspeakers in virtually any small to medium-sized Community loudspeaker installation. Standard Ethernet communication protocols allow for fast system design, system control, and remote system monitoring. Analog and Dante® inputs included in each model are assignable per channel in static or failover/backup configuration, supporting quick and easy integration into any new or existing system. The line includes the ALC-404D (4 channels x 400W), the ALC-1604D (4 channels x 1600W), and the ALC-3202D (2 channels x 3200W).

Community is also hosting a 90-minute Manufacturers' Training Session on Tuesday, June 11 at 3:00 PM, entitled Which Loudspeakers, How Many, Where to Point Them? The session will provide an introduction to Community's new array builder software – its features, technology, workflow, and EASE Focus integration. This class will introduce a new concept developed by Community called VenuePolar™ - a new Room-Loudspeaker algorithm that answers the big system design questions in addition to optimizing the results. This new technique holistically optimizes loudspeaker choice, count, rigging articulation, internal settings, amplifier choice, and impedance match. Attendees will learn the software and its intuitive 'designing backwards' workflow. Real-world examples will be demonstrated. The class qualifies for 0.75 Renewal Unit Credits and registration is required via the InfoComm website at <https://bit.ly/2Vu3Q5d>

- Ends -

www.communitypro.com

www.infocommshow.org

https://infocomm19.mapyourshow.com/7_0/exhibitor/exhibitor-details.cfm?exhid=770179&CFID=49421673&CFTOKEN=c12417130d6f1bd-509C4969-DD14-DBD3-E68D2E5C55FF923C

Community Professional Loudspeakers is a developer and manufacturer of innovative loudspeaker systems for installed sound applications. Based in Chester, Pennsylvania, Community is an American original whose innovative products have shaped the professional sound industry since the company was founded in 1968.

Media Contact: **Julia Lee** jlee@communitypro.com

Community Professional Loudspeakers • 333 East Fifth Street, Chester, PA 19013-4511 USA • t: +1 610 876 3400 • www.communitypro.com