



# I SERIES

**BalancePoint™ Flyware**

Low Profile

Easy to Install

Precise Adjustment

# I SERIES

*High performance, high output modular loudspeaker systems with exceptional flexibility and discreet styling. This series of medium-to-large format loudspeaker systems features front-loaded woofers and large constant directivity horns.*

## Point Source 800

*800-level models offer superior performance for demanding applications and feature neodymium drivers*

## Point Source 600

*600-level models address a broad range of installation needs and incorporate large-format ferrite drivers*

## Subwoofer 800

*Premium grade, high power subwoofers featuring neodymium drivers for applications demanding impactful and deep bass*

## Subwoofer 600

*Medium power subwoofers featuring extended displacement ferrite drivers*

# BalancePoint™ Flyware

## Rails

BalancePoint™ Fly Rails (22").....	4
Subwoofer behind BalancePoint™ Fly Rails (54").....	5

## U-Brackets and Vertical Yokes

U-Brackets .....	6
Vertical Yokes .....	7

## Horizontal

Isometric Array Frames .....	8
Dual Horizontal Splay .....	9
Horizontal Splay Brackets with BalancePoint™ Fly Rails.....	10
Horizontal Array Brackets with BalancePoint™ Fly Rails .....	11

## Vertical

Vertical Splay .....	12
Vertical Splay Brackets with BalancePoint™ Fly Rails .....	13
Vertical Array Brackets with BalancePoint™ Fly Rails .....	14
Dual Vertical Splay with BalancePoint™ Fly Rails .....	15

## Flyware Accessories and Facts

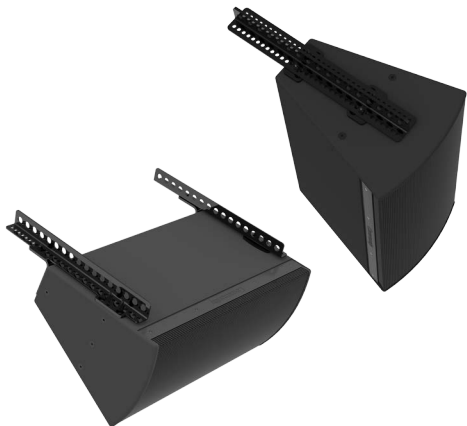
Downfill Splay Bracket .....	16
Horizontal/Vertical Splay Brackets .....	17
Tight Pack.....	18
Facts.....	19

# BalancePoint™ Fly Rails (22")

## MODELS:

**BFR22H** (horizontal)

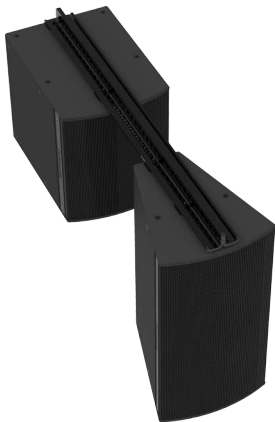
**BFR22V** (vertical)



- Pair of rails with attachment brackets and hardware
- Use to fly single I SERIES enclosures

## Subwoofer behind BalancePoint™ Fly Rails (54")

MODEL:  
**SBR54**



- Suspend one or two subwoofers behind a single full-range enclosure

# U-Brackets

## MODELS:

**IUB1122** (fits IP6/8-1122)

**IUB1152** (fits IP6/8-1152)

**IUB1153** (fits IP8-1153)



- Mount and aim single full-range loudspeakers
- Compatible with IAF40, IAF55, DVS-BFR22 and DFS kits

# Vertical Yokes

## MODELS:

**IVY1122** (fits IP6/8-1122)

**IVY1152** (fits IP6/8-1152)

**IVY1153** (fits IP8-1153)

**IVY0002** (fits IP8-0002 and IP8-1151)



- Vertically mount and precisely aim single full-range loudspeakers
- Compatible with IAF40 and IAF55

# Isometric Array Frames

## MODELS:

**IAF40** (two-way)

**IAF55** (three-way)



- Array two to three loudspeakers in portrait or landscape orientation (requires U-Brackets or Vertical Yokes)
- One additional fill loudspeaker (IP8-0002/ IP8-1151) can be added below the center loudspeaker by using a DFS bracket kit

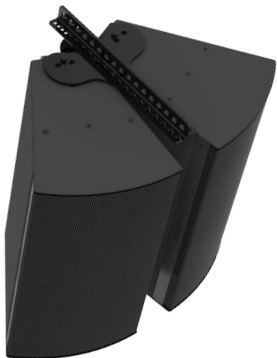


# Dual Horizontal Splay

## MODELS:

**HSB-BFR22** (two-way)

**HSB3-BFR22** (three-way)



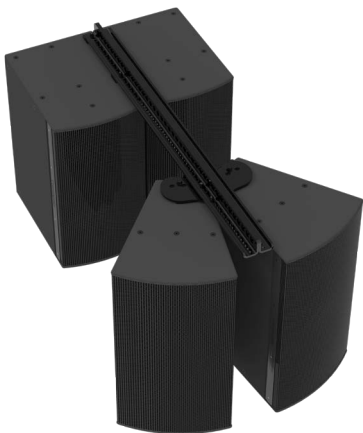
- Horizontally array two full-range models
- One additional loudspeaker can be added to the array by using an HVS or HVS3 expansion kit

# Horizontal Splay Brackets with BalancePoint™ Fly Rails

MODELS:

**HSB-SBR54** (two-way)

**HSB3-SBR54** (three-way)



- Horizontally array two full-range loudspeakers with one or two subwoofers behind
- Add an additional loudspeaker to the array by using an HVS or HVS3 expansion kit

# Horizontal Array Brackets with BalancePoint™ Fly Rails

MODELS:

**HAB-BFR38** (two-way)

**HAB3-BFR38** (three-way)



- Horizontally array two full-range loudspeakers with a subwoofer in between

# Vertical Splay

## MODELS:

**VSB-BFR22** (two-way)

**VSB3-BFR22** (three-way)



- Vertically array two full-range loudspeakers
- An additional full-range loudspeaker can be added to the array by using an HVS or HVS3 expansion kit

# Vertical Splay Brackets with BalancePoint™ Fly Rails

MODELS:

**VSB-SBR54** (two-way)

**VSB3-SBR54** (three-way)



- Vertically array two full-range loudspeakers with a subwoofer behind
- An additional subwoofer can be added by using a TPK (Tight Pack) kit

# Vertical Array Brackets with BalancePoint™ Fly Rails

MODEL:

**VAB-BFR38**



- Mount and aim a full-range cabinet under a subwoofer (must be the same height cabinet)
- An additional subwoofer can be added to the array by using a TPK (Tight Pack) kit, or an additional full-range can be added to the array by using an HVS or HVS3 expansion kit

# Dual Vertical Splay with BalancePoint™ Fly Rails

MODEL:

**DVS-BFR22**



- Vertically array and aim two enclosures or full-range/subwoofer combination
- Compatible with U-Brackets for expanded directivity

# Downfill Splay Bracket

MODEL:  
**DFS**



- Aim a single full-range or subwoofer below another vertically oriented loudspeaker



# Horizontal/Vertical Splay Brackets

MODEL:

**HVS** (two-way)

**HVS3** (three-way)



- Add one additional loudspeaker to a horizontal or vertical splayed assembly

# Tight Pack

MODEL:  
TPK



- Connect any pair of loudspeakers or subwoofers that share common suspension points

## Facts

- The BalancePoint™ Flyware kits for the I SERIES loudspeakers are modular and can be combined in a number of ways to increase the functionality of the array
- **IMPORTANT!** The maximum recommended number of loudspeakers on any combined BalancePoint™ arrayed or splayed assembly is three (3) full-range and two (2) subwoofers
- All BalancePoint™ Flyware is available in a Black or White painted finish

For technical and applications assistance, contact the Community TAG Team (Technical Applications Group) at: [tagteam@communitypro.com](mailto:tagteam@communitypro.com)



**Community Professional Loudspeakers**  
333 East Fifth Street, Chester, PA 19013-4511 USA  
Phone (610) 876-3400 • Fax (610) 874-0190  
[communitypro.com](http://communitypro.com)

5JUN2015